

RAPID
made
Your Partner for the Future

2828-116 Corbett Ave.
Portland, OR 97201
503-942-2781

www.rapidmade.com
info@rapidmade.com



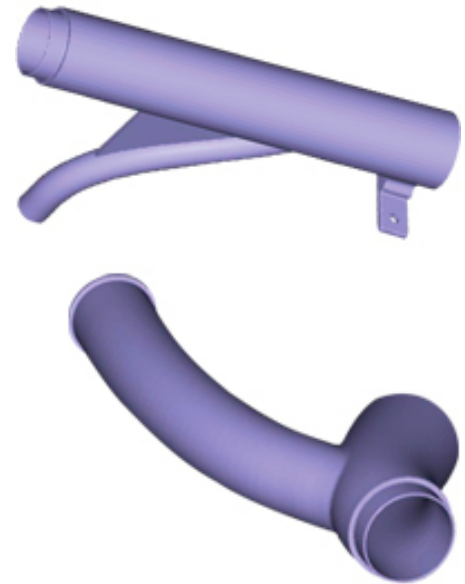
Case Study

Additive Manufacturing Solutions

Bell Helicopter manufactures the heavy-lift “tilt-rotor” Osprey, the hybrid aircraft that combines features of both airplane and helicopter to accomplish what none of its forbears can do. It can lift off, hover, and land vertically yet it can cruise at high altitudes at jet speeds.

When the aircraft recently underwent an experimental tail-wiring upgrade, technicians at the rapid prototyping lab at Bell Xworx used a additive manufacturing technology systems to build tough polycarbonate wiring conduits. Technicians installed the branching conduits in six mating sections inside the Osprey’s twin vertical stabilizers for on-the-ground testing of its wiring.

“We built the conduit for one stabilizer, and the development team installed it on the mock-up. It was successful so they immediately requested a second set for the other stabilizer,” says RP lab technician Mike Storp. After some minor variations the team requested five more complete sets for a total of 42 conduit models. “It took only two and a half days to make them all. The system ran around the clock.” The development group was pleased because Bell could keep control of the project in-house, but also because they would have had to wait six weeks if the prototypes were made traditionally, of cast aluminum. “We obviously saved money as well,” Storp says.



The lab chose the process because it can model with PC (polycarbonate) and PPSF (polyphenylsulfone). These thermoplastics work well for functional testing, which is important for demanding applications, like aerospace.

PC characteristics include dimensional stability, high heat-distortion temperature, high tensile and flex strength, and a hardness exceeding that of ABS plastic. PPSF characteristics include a VØ Flammability rating, the highest impact strength of any rapid prototyping plastic, very high tensile and flex strength, dimensional stability, and resistance to petroleum products, acids, bases, and chemicals. “You’ll never see an epoxy part on an aircraft for a

RAPID
made
Your Partner for the Future

2828-116 Corbett Ave.
Portland, OR 97201
503-942-2781

www.rapidmade.com
info@rapidmade.com



Case Study

Additive Manufacturing Solutions

functional test,” says Storp. “Fuels and hydraulic fluids would actually dissolve it.”

“[The technology] has strong points besides durability, but ease of post-processing is at the top of the list for me,” Storp says. “With some other processes, it’s frustrating what you have to go through. They might require three times longer in post-processing than it took to build the part. [It] is a faster, cleaner process.”

“It takes a long time to design an aircraft. Starting from scratch it can take five years, and it’s a rigorous development process to go through,” says Storp. “When using [additive manufacturing] over the course of development for a new aircraft, there is great potential to reduce costs and development time.”

Those qualities make additive manufacturing technologies essential to the lab’s purpose, which is to contribute to aircraft prototype development and support Bell Helicopter’s long-range plan to become the heavy-lift tilt-rotor aircraft leader. “The efficient process allows us to do more iterations than we could with other processes,” Storp says. “That results in better-designed components.”

Better-designed components help to build a better end product. And when your product is as sophisticated as the Osprey, that’s an important aim.

